

The global online booking service, enabling anglers to book their fishing at leisure. See the latest catches, check river levels, arrange a casting lesson, contact a guide, hire a rod, find somewhere to stay and much, much more besides. Visit www.fishpal.com to find out more.

Dear Angler,

I always enjoy the start of a new year. The salmon season, eagerly awaited by ghillies and anglers alike, has now started, soon to be followed by the wild trout season.

The chance for us 'nine-to-fivers' to dream about casting a line, be it for salmon, rainbows, browns or grayling, is fuelled by checking the internet during our breaks, seeking news of what others are achieving. If you are like me, you'll be looking for fishing holiday destinations, whilst reading the Trout and Salmon magazine's latest fishing and tackle reviews.

During the year, to help you in your fishing exploits, we will be having news and features on rivers and still-waters in the U.K. and around the Globe, written by a selection of hand picked international writers, guides and ghillies, as well as up-and-coming anglers.

I hope you enjoy this newsletter. Best wishes for the 2011 season, whatever your fishing genre.



Tight lines!

Anne Woodcock
Marketing Director

FishPal

Spring Fishing for Salmon

Few fish are more challenging to the freshwater angler than the Atlantic Salmon. So who better to ask about early spring fishing tactics than world champion Speycaster, guide and fishing consultant, Eoin Fairgreive:

'The main factor to consider when salmon fishing at this time of year is that cold water will slow down the salmon's metabolic rate. This will limit the salmon's willingness to travel great distances to intercept the fly.

Early spring fishing tactics are based around presenting the fly close to the fish's holding position. With this in mind, using tube flies with sinking lines or fast sinking tips will allow you to fish the fly deep and close to the salmon.

Consider the speed the fly is coming through the stream. If you are fishing a fast, streamy pool, think about mending the fly line upstream once it enters the water. This will have the effect of slowing down the speed the line swings through the pool and the opportunity for the fly to get out amongst the fish. Best



January Springer released on the Newtyle Beat, River Tyne in 2011

times to fish are the warmest part of the day when the sun is highest in the sky, from 11 in the morning to about 3 in the afternoon.

If you are lucky enough to be out on a salmon river in the in the next few weeks, I wish you every success and tight

lines for the rest of the season!'

FishPal recommends Eoin's selection of tube patterns from the FishPal early spring collection - see the shop menu at; www.fishpal.com



Charity donations since 2003

Since 2003 we've been providing an online service for anglers and leading fisheries in the UK and Europe.

But, did you know that some of our sites are not-for-profit where all proceeds go back to improving their respective river eg FishTyne, FishTweed, FishDee etc. If you book a days fishing through the Salmon & Trout Association site, donations go back to support the great work of the S&TA. Charity donations throughout the FishPal site have been given to the North Atlantic Salmon Fund, and Wild Trout Trust, as well as various river trusts.

To continue this excellent work, FishPal has launched an online charity auction site for fishing organisations to raise funds for their respective charities. Organisations wanting to use this innovative system will be offered a bespoke branded online facility.

River Derwent

The River Derwent rises in the North Pennines Area of Outstanding Natural Beauty, flowing into Northumbrian Water's Derwent Reservoir, down through Derwent Valley to join the Tyne at Derwenthaugh. Since the decline of heavy industry, the river has steadily improved and now supports wild brown trout & grayling, with a good spread of age groups and the occasional heavyweight fish.

Most of the river fishing is managed by Derwent Valley Angling Association and Axwell Park. Both Associations are conservation minded and encourage catch and release. Affordable day tickets are available from both Associations and Axwell Park also have two beats in the Tyne Angling Passport scheme which is managed by the Tyne Rivers Trust & available from www.fishtyne.co.uk a not-for-profit company. All proceeds from FishTyne go back into improving the river.

IN BRIEF

Still Water fisheries

From large boat fishing venues to small lochs, lakes & ponds. FishPal has some of the best specimen trout fishing available online in the UK, both for the fly and bait fishing enthusiast.

Rod Availability

FREE Rod Alert service keeps you up to date with the latest availability on the FishPal system. Search by area, price, species, and much more. Updated every hour online.

Wild Brown Trout

We have wild brown trout fishing, much of it in beautiful locations and accessible to all. Permits available at FishPal are remarkably cheap, usually from a few pounds a day.

Free Reports

Ever wondered how some anglers find fishing on full beats at the last minute? Register for a Free Fishing Report. Let us update you daily with the latest online fishing availability at FishPal.

Hampshire Record

We are pleased to announce fishing availability on one of the most famous chalkstreams in Hampshire, the River Itchen.

The Lower Itchen Fishery, founded in 1954, is the longest stretch in private ownership. During the 2010 season the fishery broke all records for salmon with a total of 267 fish, including the highest catch record of all chalkstream salmon fisheries in the area. They also enjoyed the largest salmon at 18lb and most fish caught in one day.

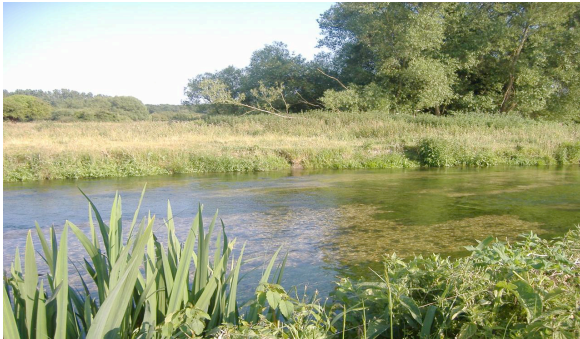
To conserve the population of salmon on the Test and Itchen the Environment Agency insist fisheries have a policy of catch and release. However, the fishery still offers good salmon fishing with the added bonus of being allowed to catch up to two brown trout per beat per visit and no limits on the number of sea trout, which all add to a days sport.

Anglers can enjoy salmon fishing over 3 beats which are kept to suit the salmon's preference for deep channels cut into the Potamogeton and lies created by means of groynes and boulders on the riverbed. The fishery lends itself to fishing for salmon with bait and lures with the prawn, ledger or float fished (used after 16th June). The fishery provides a ghillie and a tackle hire service on request.



Lynsdey Farmiloe, Managing Director of Lower Itchen Fishery and Granddaughter of the Fishery Founder, says "Quality salmon fishing is closer to home than you think, just 90 minutes from London"

FishPal also have fishing availability for the River Test and River Tamar. The River Tamar forms the county border between Devon and Cornwall and has also seen records break for salmon, sea trout & brown trout in 2010.



Affordable Fishing

Last year we started noticing that the hard earned cash in our pockets was not going as far as it used to, which means in 2011 our fishing Pound needs to work harder.

There is a range of opportunities at our disposal to fish within budget with day tickets on association and syndicate waters.

Day-tickets on rivers can cost from £5. Some rivers offer Angling Passport Schemes, with profits going back to improve the river's habitat.

Budget tickets for stocked fisheries, with reduced catch and release prices are available throughout the year from £12.

Some of the more famous salmon rivers in the early part of the season advertise day tickets which seem incredibly cheap, from £8 per day. It's a great opportunity to try a beat at a reduced cost to see if its worth spending the money later in the season.

As more fishermen head for the coast, saltwater fly fishing is currently becoming the fastest growing area of our sport and it's free.

Remember, finding day tickets on good water is much harder when the fishing is really good. FishPal's FREE rod alert service is well worth using, and is particularly useful, if you are looking to fish some of the prime rivers in UK & Ireland. To check or book fishing visit

www.fishpal.com

Irish Guide Service

Anglers are spoilt for choice when it comes to Ireland. Game, coarse and sea angling can be enjoyed at various locations, always near delightful scenery.

We now have extended our guide and instructor service to Ireland. Guides are eminently qualified through experience to take you somewhere that suits the conditions at the time. They will look after you, advise you on the best place to fish, and have an endless supply of fishing knowledge and enthusiasm.

Fishing availability has now been added to the River Mourne which can rightly be compared to the other great Irish salmon rivers such as the Blackwater, the Lower Bann, the Moy and it's sister river, the Finn. The Abercorn estate water comprises four beats with over 24 named pools. To book visit www.fishpal.com



Experienced Irish guide Stevie Munn with a client

FishPal ONLINE

Spring Fly Collection



FishPal's exclusive range of spring salmon flies have been carefully selected by world-champion Speycaster, Eoin Fairgrieve. They come in special FishPal fly boxes containing ten or more flies and make wonderful presents for any angler. They can be bought from the online shop or by telephoning our head office.

Win a Loop Rod



LOOP

February sees the launch of our latest angling competition. From February to July, Loop Rods are offering FishPal customers the chance to win a double handed rod every month. Visit the FishPal website's competition page for more details.

Gift Vouchers

Personalised gift vouchers are a great way to celebrate any special occasion, birthdays, anniversary, retirement or as a 'thank you' and are the perfect gift for any angler. Versatile for the recipient, they can be used for a range of products such as fishing days, flies, rods, tuition, guiding etc. Visit the online shop or phone head office.



Contact FishPal

Web www.fishpal.com

Email info@fishpal.com

Tel: 01573 470612

Stichill House, Kelso, Scotland TD5 7TB

Follow us on [Twitter](#) [Facebook](#) [LinkedIn](#)